

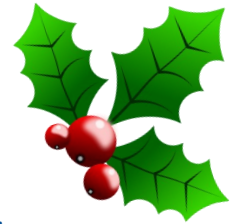
# Sensory Inclusion Service Hearing Impairment Newsletter

Issue  
**44**  
December 2024

Sensory Inclusion Service, Floor 6, Darby House, Lawn Central, Telford, TF3 4JA



## Holiday cover



There is no TOD on call over the Christmas holidays this year.

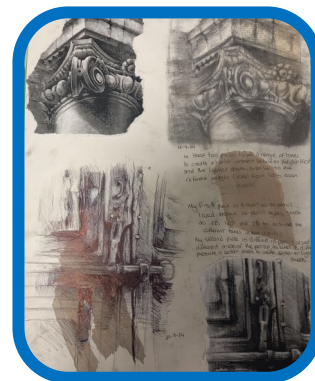
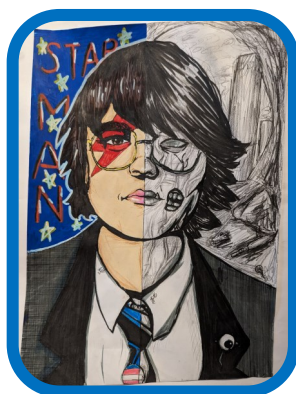
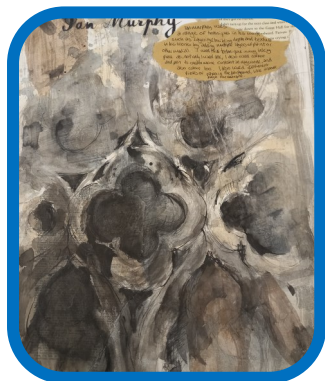
For support, please contact your GP or audiology on [sath.audiology@nhs.net](mailto:sath.audiology@nhs.net)

01952 282804 or 01743 261482

Darcy joined reception class in September 2024. She has made an excellent start. Her class teacher is very pleased with the progress she has made with phonics. She continues to enjoy games and sharing books during her sessions with the Teacher of the Deaf. She loves to have fun and has a wonderful sense of humour. Well done Darcy!



Che has settled really well into reception class. His teachers are very happy with him and they are using makaton with the whole class to help Che's communication. He is working hard and has made some lovely friendships already. Well done Che!



Elliott, a year 10 student has just received a subject award for their Art Work this term. Their pen, pencil and ink artwork is based on Ian Murphy's work.



Quinn went on a residential trip to Redridge in Powys. She had the most amazing time, showed super bravery when attempting all the activities and was so proud of her own achievements.



Joe has always enjoyed listening to his Auntie and Uncle tell him of their adventures, kayaking, rock climbing, and hiking. When asked what he wanted for his 8th Birthday he chose to descent Mount Snowdon. On a very wet September day, he took the train to the summit with his Auntie and walked back to the base. He loved meeting lots of walkers who were really impressed with his endurance and happiness throughout. Joe is looking forward to his next mountain adventure!



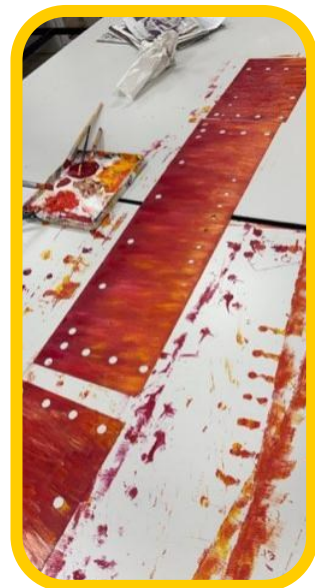
Emily has had a great start in her new school. She especially enjoys the science lessons, horse riding and gardening activities.

She also met up with Mrs Peter's, who was her wonderful TA for 8 years at primary school. They enjoyed catching up over fish and chips at Blists Hill!



### Attingham park

Jordan, who is studying art at a local college was involved in designing a phoenix inspired tree for Attingham Park's Christmas adventure walk.



Unfortunately, due to the storms, our trip to Attingham was cancelled. We have already booked for spring, hopefully you can join us!



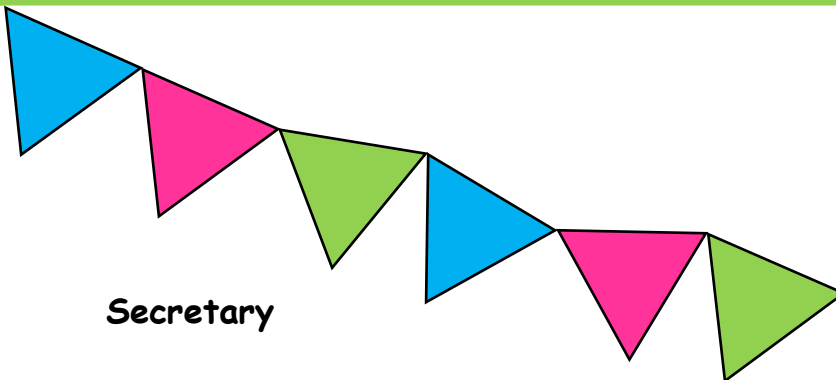
Shropshire Deaf Children's Society

SDCS was set up over 66 years ago by Edwin Owen following a chance encounter with a 12 year old deaf girl with no speech which occurred while he was serving with the Army in Italy during WW2. Upon his return to England Mr Owen trained as an ear, nose and throat surgeon and later moved to work at the Royal Shrewsbury Hospital. The charity is still going strong and continues to support hearing impaired children and their families across Shropshire and Telford & Wrekin. Over the past few years, the SDCS has paid for equipment, funded bowling nights, Christmas parties, pantomime trips, Family Fun days and much more.

We are grateful to all of the volunteers from the SDCS committee who give up their time to ensure that these events can take place.

SDCS are always looking for volunteers to join the committee to bring new ideas. If you would like to join us, please contact Kate [secretary@sdcs.org.uk](mailto:secretary@sdcs.org.uk)

## Meet the committee



**Secretary**



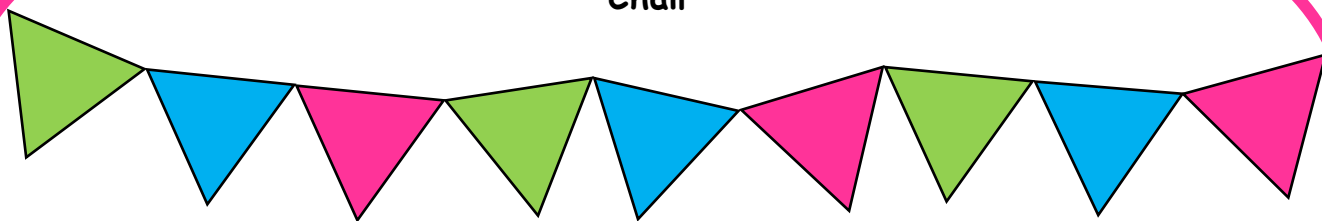
I'm Kate, the secretary, and have been on the SDCS committee since 2018.

My son, Ray, was diagnosed with a severe sensori-neural hearing loss roughly a year after birth, and after wearing hearing aids for over two years with little progress, was finally fitted with his first cochlear implant in May 2017. We first became aware of the SDCE when we started attending the SIS run family group back in January 2015, which we rarely missed up until Ray and his twin brother Jim left to start school.

Like other members on the committee, our whole family have been lucky enough to directly benefit from the work of SDCS, through family group funded activities and events, family nights, Christmas events, craft events, family days and even a mom's night out. For a relatively small charity, SDCS help fund some fantastic resources and events that make a real difference to so many children and families throughout our county. My aim as a committee member is to help the charity continue with its fantastic work so families can continue to benefit from the experiences we have had.

Sensory Inclusion Service, Floor 6, Darby House, Lawn Central, Telford. TF3 4JA

## Chair



Hi, I am Louise, and I am the new Chair of the Shropshire Deaf Children's Society. I have been actively involved in the charity for the last year and have benefited from their work since my eldest son, James, was born nearly 9 years ago with hearing impairments, he was born profoundly deaf in his left ear, with a mild/moderate hearing loss in his right ear. He was fitted with hearing aids from the age of 8 weeks and has continued to be supported by the SIS.

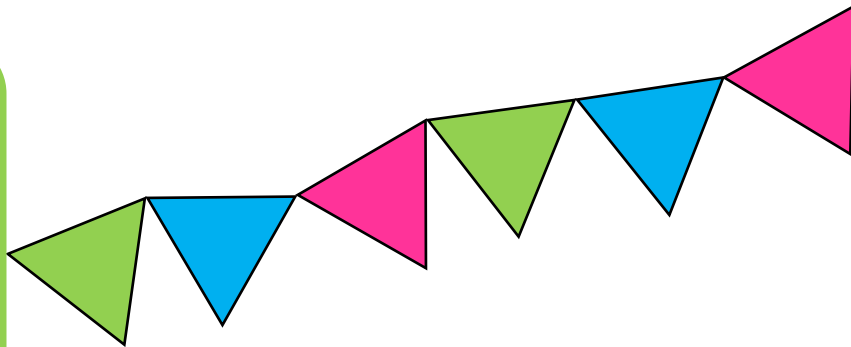
I have a background in charity work and I am Operations Manager for the Lingen Davies Cancer Fund, a charity I have worked for over the past 20 years, this experience is something I have been able to bring over to SDCS.

The charity provides such great opportunities for young people with hearing impairment, including social activities for the children, most recently Arthog Outreach Centre and Samba Drumming workshops, and family events such as trips to the pantomime, family fun days and nights out.

They also provide funding to help with transition days, so children who are moving on to secondary school can speak to other hearing impaired children who started secondary school the year before to help them understand what it is like moving to a bigger school.

The charity does so much for young people with hearing loss and is a great organisation to get involved with. Without them, these activities would simply have to stop as there is no other funding available.

We are in need of some more people to join the committee to help continue the excellent work carried out by the charity. If you are able to spare a couple of hours every other month to help we would be so grateful, please get in touch.



## Treasurer

I'm Ian. As a family we have been involved with the SDCS for the past 20 years, ever since our son Alexander was diagnosed as profoundly deaf, following meningitis.

When Alex was little, we were recipients of support from the charity, either directly or through funding for the Sensory Inclusion Service (SIS). However, ten years ago I took early retirement from teaching and felt that I was now able to give something back to the SDCS. I joined the committee and was soon persuaded to take on the role of Chair, a position I held until last summer. I'm currently fulfilling the role of treasurer.

Thanks to the fantastic support of the other committee members, I have had a really enjoyable time helping the charity to raise money and put on events for the children and their families.



## Fabulous Fundraiser

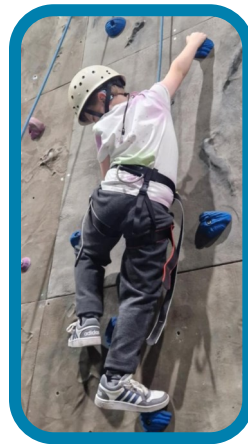
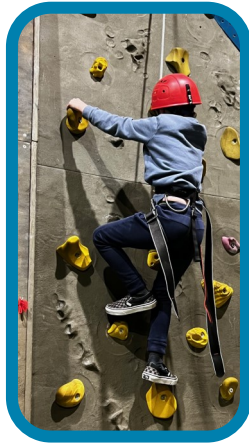


A huge thank you to Rory who organised a sponsored swim to raise money for Shropshire Deaf Children's Society. He swam 1000m without stopping. He raised an impressive £1400.



## Arthog

A huge thank you to Shropshire Deaf Children's Society for funding our climbing event at Arthog outreach. The children had a fabulous time!



## Quiz Night

A huge thank you to The Three Horseshoes in Alveley who held a quiz night to raise funds for Shropshire Deaf Children's Society. They raised a fabulous £65. Thank you for your support!



## Sponsored Walk



Our sponsored walk which was due to take place in October was sadly cancelled due to the dreadful forecast. We decided to still hold the fancy dress competition and I'm pleased to announce that the winner is Hermione who insisted that she still wore the outfit on the day!

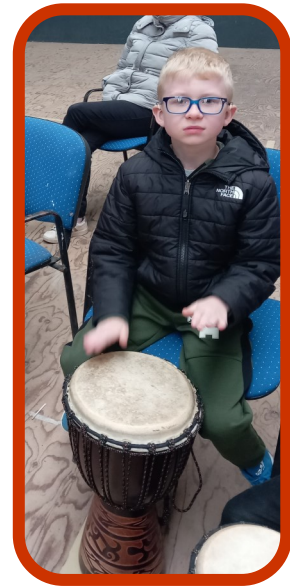
We have rescheduled the walk for Sunday 16th March 2025 and the theme is spring. Hopefully the weather will be kinder to us.

This year SDCS has funded many of the events organised by Sensory Inclusion Service, including the Awards evening, Parents event, Transition Day, Arthog and the much loved Pantomime. They also fund activities and trips for our Family Group as well as contributing to the cost of our annual course to enable us to train the support staff in schools throughout Shropshire. It would be great to see you there!

## Samba Drumming Workshop

Following the hugely Taiko Drumming Workshop at The Hive, we were very excited to be offered the opportunity of a Samba Drumming workshop at Shrewsbury Flaxmill Maltings. The day consisted of a guided tour for students and their families of the exhibition which tells the history of this incredible building, the first multi floored, iron-framed building in the world, the grandparent of all skyscrapers!

Children then took part in the workshop with the fabulous Beth and Jon. A great time was had by all!





The Local Offer contains a wide range of information and services to support children and young people with special educational needs or disabilities. These include services provided by the Local Authority and the health service, as well as services provided by the voluntary and private sectors (e.g. charities and disability groups, nurseries, youth clubs, leisure activities etc.)

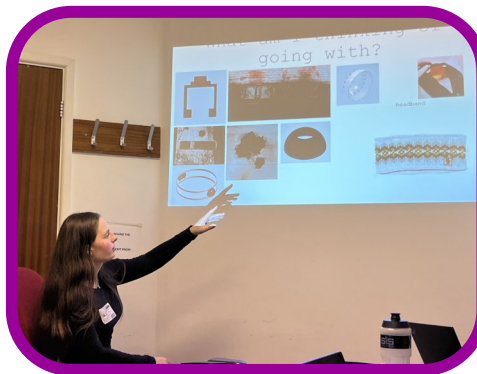
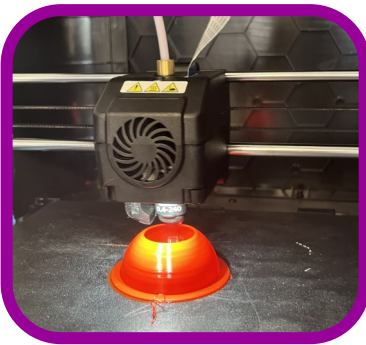
Information is also available for young adults, to help you make informed choices about things that are important to you such as where to live; transport; social activities, work and training; and becoming an adult.

As well as being able to access the newsletter, there is lots of useful information under Sensory Inclusion Service and the hearing impaired section.

[www.telfordsend.org.uk/info/1/home/18/sensory\\_inclusion\\_service](http://www.telfordsend.org.uk/info/1/home/18/sensory_inclusion_service)



## Product Design



My name is Beatrice and I am a second year sixth form student studying A level Product Design. 50% of the course is exam based whilst the other 50% is based around a design project. For this project, you as a designer have to identify a problem people face relatively often, then design a solution, showing the stages of design as you go. Since having BAHA (Bone Anchored Hearing Aid) surgery in July 2023, I have not been able to wear warm hats in the winter months to keep my head warm. This is because every time I place the hat over the aid, it produces a lot of squealing feedback which forces me to remove the hat and go without. This almost ruins my experience of being outdoors in some instances. From surveys I have put out on social media, I understand this is a common issue BAHA users face. When the chance to research this problem arose via my A level project, I immediately took it and began trying to find a solution. Firstly, I researched the existing products on the market which were insufficient in solving the feedback issue. Whilst they work for some people, I feel there has got to be a better solution. I have been using 3D printing combined with other methods of manufacturing such as sewing and working with wire. Whilst carrying out this project, I have been in touch with several people who experience a similar issue and also professionals in the field to ask for their suggestions. On 26th November, I gave a presentation to the Sensory Inclusion Service in Telford about my project and the current idea I am working on. Although I don't have a final design at this stage, I am very much in the process of testing and refining several ideas. The project runs until March 2025 and I am aiming to have a fully functioning design by then. However, even if I am unsuccessful, I think I will carry on designing until I have a sufficient solution. We are very interested to hear how this project develops.

## Sensory Inclusion Service Family Group

SIS (HI) Family Group takes place every Thursday during term time for hearing impaired pre-school children and their families.

Families can arrive anytime between 9.30 am – 11.30 am.

### Spring 2025

#### January

9th - Walker book week

16th - Tiger crafts

23rd - Bird crafts

30th - Snake crafts

#### February

6th - Talk Claire Wilson

13th - Heart crafts

20th - **Half term – no group**

27th - Rainbow crafts

#### March

6th - Wildlife crafts

13th - Spring crafts

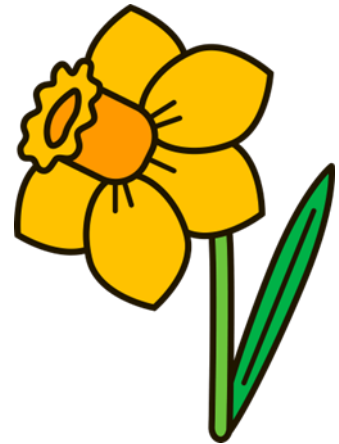
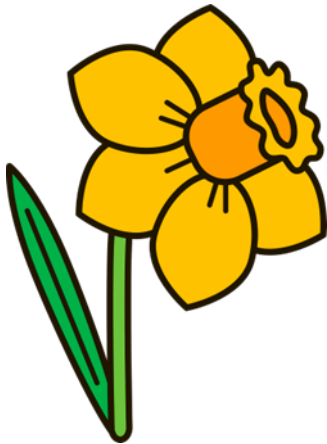
20th - Comic relief

27th - Mother's day crafts

#### April

3rd - Trip

10th - Party



The Stepping Stones Centre, Brunel Road, Malinslee, TF3 2BF

Sat Nav TF3 2HZ

If you have not attended Family Group recently, or if you are interested in attending for the first time, then please get in touch. It is a chance to meet other families, have a coffee, for the children to play and to engage in art and craft activities.

Mark Rutter also attends to check hearing devices.

If you are interested in attending, contact Nichola Clark on 07581035047 or [nichola.clark@telford.gov.uk](mailto:nichola.clark@telford.gov.uk)

Sensory Inclusion Service, Floor 6, Darby House, Lawn Central, Telford. TF3 4JA

## Sensory Inclusion Service update



Dear Children and Families,

As we wrap up 2024, we would like to reflect on all the wonderful activities we've been lucky enough to share this year. This year has been full of exciting opportunities for our families to come together, let's have a look back at some of the highlights:

**Outdoor fun:** Despite some challenging weather we have managed to brave some outdoor adventures! Our spooky Halloween walk was unfortunately postponed, but our families were able to enjoy a fabulous summer picnic and Easter walk at Attingham Park.

**Taiko Drumming:** The rhythmic beats of our Taiko Drumming workshop resonated with everyone. Children and parents learned this traditional Japanese art form, creating powerful and harmonious sounds together.

**Transition day:** Transition Day was a great success, helping children prepare for the next stages of their educational journey. Activities were designed to build confidence and excitement about what lies ahead.

**Annual Awards Afternoon:** A fabulous event, celebrating the achievements of our children and families. Each award highlighting the unique talents and progress made throughout the year.

**Parents social evening:** We had a wonderful social evening, offering a chance for parents to connect, share experiences, and build a supportive community network.

**Arthog Outreach Centre:** These adventurous climbing sessions brought out the explorers in us all. Children engaged in activities that fostered teamwork and resilience, making unforgettable memories.

**Samba drumming workshop:** The Samba Drumming Workshop brought vibrant and energetic rhythms to Shrewsbury's Flaxmill Maltings. Participants enjoyed learning new beats and dancing to the lively music.

And the highlight of the year...the **pantomime!** This year's performance of *Sleeping Beauty* promises to be a spectacular event. Our children are in for a real treat!

As we move into the new year, we look forward to creating even more memories together. A HUGE thank you to the SDCS for all you do for our children and young people, and to you all for being part of our community and for making 2024 so special.

We wish you a joyful holiday season filled with love, peace, and happiness.

Warmest wishes

*The SIS team xxx*



## Upcoming events

Circus Starr - 21st January 2025

Sponsored Walk - 16th March 2025

Attingham Easter walk - 5th April 2025



Wishing you seasons greetings for a happy holiday.



### Local Offer for Special Educational Needs and Disability

Discover everything you need to know about education, health and care services in your local area for children and young people with SEND 0-25yrs at...

[www.telfordsend.org.uk](http://www.telfordsend.org.uk)



#### Key features...

- Search for clear and accessible information, advice and sources of support.
- Explore leisure, fun and short breaks activities.
- Find out about specialist services and education health and care plans.
- Learn how schools support special educational needs.
- Use the interactive map showing what is available near to where you live.
- Have your say through our online feedback form.



[www.telfordsend.org.uk](http://www.telfordsend.org.uk)

## Need this in large print or Braille?

If you would like to receive this newsletter in Large Print or Braille, please email

**sendandinclusion@telford.gov.uk**



[Shropshire's SEND Local Offer](#) is a single place for information and services for children and young people with special education needs and/or disabilities, their families and the practitioners who support them.

Take a look at the [SEND Family directory](#) for local events, groups and things to do. For news and updates please like and follow us on [Facebook](#) and [Twitter](#).

Email: [Local.Offer@shropshire.gov.uk](mailto:Local.Offer@shropshire.gov.uk) Telephone: 0345 678 9063

Sensory Inclusion Service, Floor 6, Darby House, Lawn Central, Telford. TF3 4JA